



ARDEX FL™ Grout Installation Overview

Before installing ARDEX FL™ Grout, please review the technical data sheet completely.

Mixing

Mix ARDEX FL Grout with cold clean water –
Add water first then add ARDEX FL Grout

- 25 lb. (11.3 kg) bag - **2 1/4 - 2 1/2 quarts (2.1 - 2.3 L)**
- 10 lb. (4.5 kg) box - **28 to 32 oz. (0.8 - 0.9 L)**
- Smaller quantities by hand,
4 parts powder to 1 part water by volume

Mix **2 to 3 minutes** to a creamy, smooth, lump-free consistency

No slake time is required!

ARDEX FL Grout mixes to a revolutionary new consistency that is creamy and much looser than other grouts... easier filling of the grout joint, significantly more coverage in less time, fuller grout joints and excellent color consistency.

Installation

Using a rubber float, move the grout over the joints until they are completely filled. You will notice immediately that ARDEX grouts are much creamier and smoother than traditional grouts.

ARDEX FL has a working time of **30 minutes**.

Remove all excess grout from the face of the tile using the rubber float in a snowplow fashion at a 45° angle to ensure the grout is not pulled from the joint.

Washing

Let the ARDEX FL Grout set for **30 to 40 minutes*** at 70°F (21°C). Wash off with a lightly dampened ARDEX Sponge. Do not wash the grout off as you go! ARDEX grouts are formulated differently than traditional grouts to provide full hard grout joints but easy clean-up of the face of the tile.

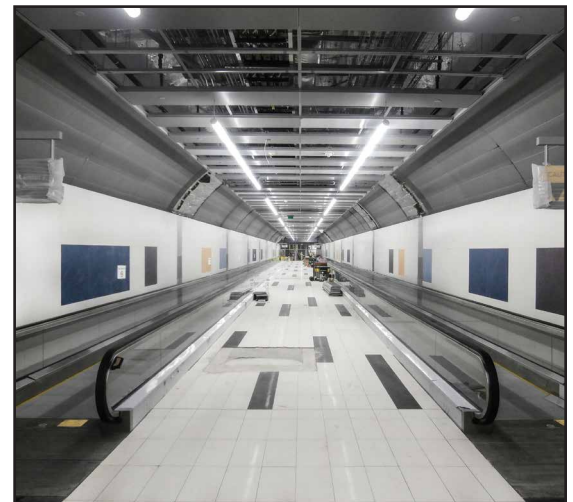
ARDEX FL Grout can accept traffic in **just 90 minutes!**

Any dry film (haze) remaining on the tile surface is removed easily with an ARDEX sponge or similar after the grout is completely hardened in the joints.

* Grout may set faster than 30 to 40 minutes in extremely warm temperatures. Once the grout has taken a firm set in the joints, the joints can be formed and the residual grout can be removed easily with a lightly dampened ARDEX sponge. If the grout hardens on the face of the tile, unlike other grouts, it can be cleaned easily using a white Scotch-Brite® pad, or similar, working in a circular motion to loosen the grout. Remove with a barely damp ARDEX sponge, rinsing the sponge with clean water after each pass.



Revolutionary new creamy, smooth consistency



Fills easily for fuller and stronger joints



Wash after 30 to 40 minutes*



ARDEX FL™ Grout Color Chart

| | | | | | |
|-----------------------|--|---------------------|--|----------------------|--|
| Polar White 01 | | Stone Beach 13 | | Stormy Mist 25 | |
| Fresh Lily 02 | | Chocolate Mousse 14 | | Organic Earth 26 | |
| Sugar Cookie 03 | | Gray Dusk 15 | | Azure Blue 27 | |
| Antique Ivory 04 | | Ground Cocoa 16 | | Gentle Blush 28 | |
| Winter White 05 | | Coffee Bean 17 | | Fresh Magnolia 29 | |
| Classic Vanilla 06 | | Dove Gray 18 | | Pink Champagne 30 | |
| Floating Driftwood 07 | | Silver Shimmer 19 | | Burnt Orange 31 | |
| Vintage Linen 08 | | Ocean Gray 20 | | Baked Terra Cotta 32 | |
| Natural Almond 09 | | Slate Gray 21 | | Asparagus 33 | |
| Irish Creme 10 | | Cast Iron 22 | | Summer Yellow 34 | |
| Barley 11 | | Charcoal Dust 23 | | Brilliant White 35 | |
| Wild Mushroom 12 | | Black Licorice 24 | | | |

Due to variations in printing processes, colors are approximate. Please refer to ARDEX grout kits for more accurate color comparisons. Types of tile, substrate and installation environment may cause color variation.

ARDEX FL™ Grout Coverage Chart

| ARDEX FL™ Rapid Set Flexible Sanded Grout Coverage Chart | | | | | | | | |
|--|--------------|------------|-------------|-----------|-------------|------------|-------------|----------|
| Grout Joint Size - Square Feet | | | | | | | | |
| Tile Size | 1/16" 0.0625 | 1/8" 0.125 | 3/16" 0.188 | 1/4" 0.25 | 5/16" 0.313 | 3/8" 0.375 | 7/16" 0.438 | 1/2" 0.5 |
| 1" x 1" x 1/4" | 92.0 | 47.5 | 32.7 | 25.5 | 21.1 | 18.3 | 16.3 | 14.9 |
| 2" x 2" x 1/4" | 181.1 | 92.0 | 62.2 | 47.5 | 38.6 | 32.8 | 28.6 | 25.5 |
| 4-1/4" x 4-1/4" x 5/16" | 304.7 | 153.5 | 102.8 | 77.9 | 62.7 | 52.7 | 45.5 | 40.2 |
| 4" x 8" x 1/2" | 238.9 | 120.1 | 80.3 | 60.7 | 48.7 | 40.9 | 35.2 | 31.0 |
| 6" x 6" x 1/2" | 268.7 | 135.1 | 90.3 | 68.3 | 54.8 | 46.0 | 39.6 | 34.9 |
| 8" x 8" x 3/8" | 477.1 | 239.5 | 159.9 | 120.7 | 96.8 | 81.1 | 69.7 | 61.3 |
| 12" x 12" x 3/8" | 714.8 | 358.3 | 238.9 | 180.1 | 144.2 | 120.7 | 103.6 | 91.0 |
| 13" x 13" x 3/8" | 774.2 | 388.0 | 258.6 | 194.9 | 156.1 | 130.6 | 112.1 | 98.4 |
| 16" x 16" x 3/8" | 952.4 | 477.1 | 317.9 | 239.5 | 191.7 | 160.3 | 137.5 | 120.7 |
| 18" x 18" x 3/8" | 1071.2 | 536.5 | 357.4 | 269.2 | 215.4 | 180.1 | 154.5 | 135.5 |
| 24" x 24" x 3/8" | 1427.6 | 714.8 | 475.9 | 358.3 | 286.6 | 239.5 | 205.3 | 180.1 |

Coverage based on 25 lb. bags. Coverage may vary based on jobsite conditions and installation method. Please refer to individual product technical data sheets www.ardexamericas.com

